

OCLUSION.
RELACION TRICENTRICA.
CRANEOVERTEBRAL CRANIOMANDIBULAR Y
OCLUSION CENTRICA DINAMICA EN REPOSO.

OCLUSION.
TRICENTRIC RELATION.
CRANIOVERTEBRAL CRANIOMANDIBULAR AND
CENTRIC OCLUSION AT REST.

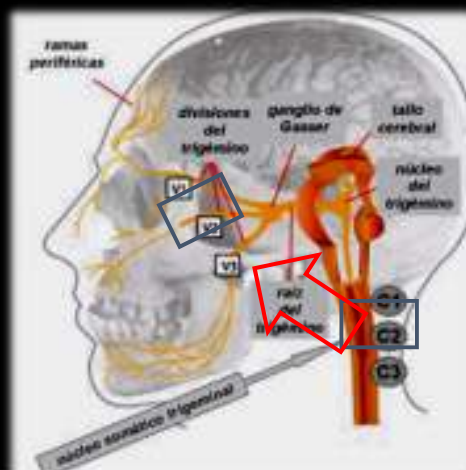
PROF. DR. MARIANO ROCABADO

EL NÚCLEO TRIGEMINOCERVICAL.

Trigemincervical nucleus (Bogduk, 1994).

ESTA ES LA BASE DE LA COMUNICACION INTERPROFESIONAL.
INTERPROFESSIONAL COMMUNICATION.

THIS IS THE BASE AND THE REASON FOR
INTERPROFESSIONAL COMMUNICATION.



NEUROLOGICAL
LINK.

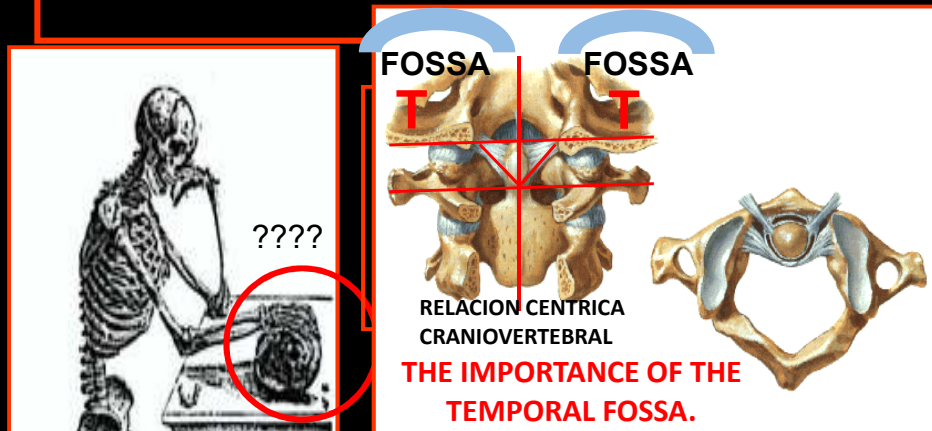
THE CONVERGENCE OF CERVICAL AND TRIGEMINAL AFFERENTS ON SECOND-ORDER NEURONS IN THE TRIGEMINOCERVICAL NUCLEUS MAY REFER PAIN FROM THE UPPER CERVICAL SPINE INTO THE HEAD AND FACE. FURTHERMORE, "BI-DIRECTIONAL INTERACTIONS" BETWEEN TRIGEMINAL AND UPPER CERVICAL AFFERENTS MAY ALSO EXPLAIN NECK SYMPTOMS OF TRIGEMINAL ORIGIN (EG, MIGRAINE)

LA CONVERGENCIA ENTRE LAS FIBRAS AFERENTES CERVICALES Y LAS TRIGEMINALES EN LA NEURONA DE SEGUNDO ORDEN EN EL NUCLEO TRIGEMINOCERVICAL. PUEDEN REFERIR DOLOR DESDE LA COLUMNA CERVICAL SUPERIOR A LA CARA Y EL CRANEO. ASI MISMO ESTA **INTERACCION BI-DIRECCIONAL** PUEDE EXPLICAR LOS SINTOMAS DE LA COLUMNA CERVICAL DE ORIGEN TRIGEMINAL.

DREYFUS P; MICHAELSON M, FLETCHER D, ATLANTO OCCIPITAL AND LATERAL ATLANTO AXIAL JOINT PAIN PATTERNS. SPINE 1994; 19: 1125-31

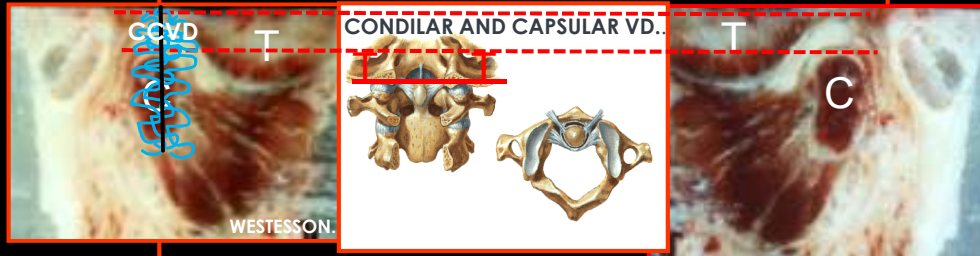
CRANIOCERVICOMANDIBULAR CENTRIC RELATION. NOT A PROBLEM OF AGE.

CONGRUENCY OF JOINT SURFACES FOR PROPORTIONAL GROWTH AND DEVELOPMENT.



CRANIOCERVICOMANDIBULAR TRICENTRIC RELATION.

206



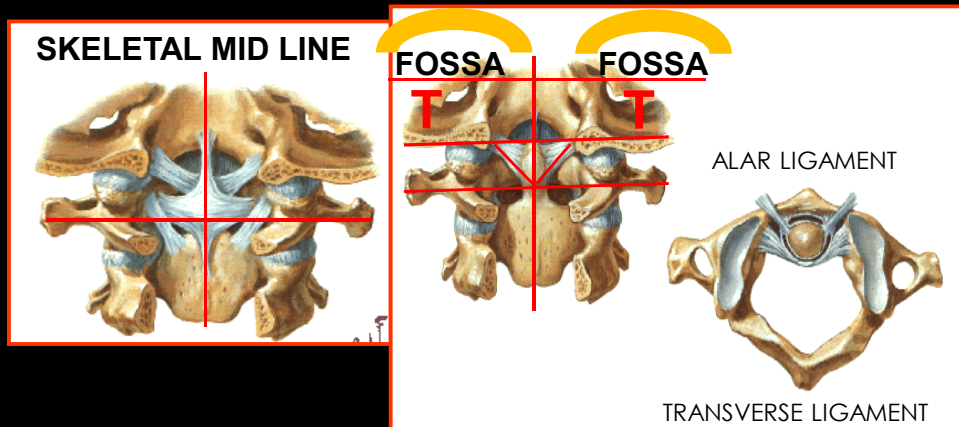
CONGRUENCY OF JOINT SURFACES FOR PROPORTIONAL GROWTH AND DEVELOPMENT.

CONCEPTO DE CONGRUENCIA DE LAS SUPERFICIES ARTICULARES SINOVIALES Y SU RELACION CON LOS PROCESOS DE DESARROLLO Y CRECIMIENTO.

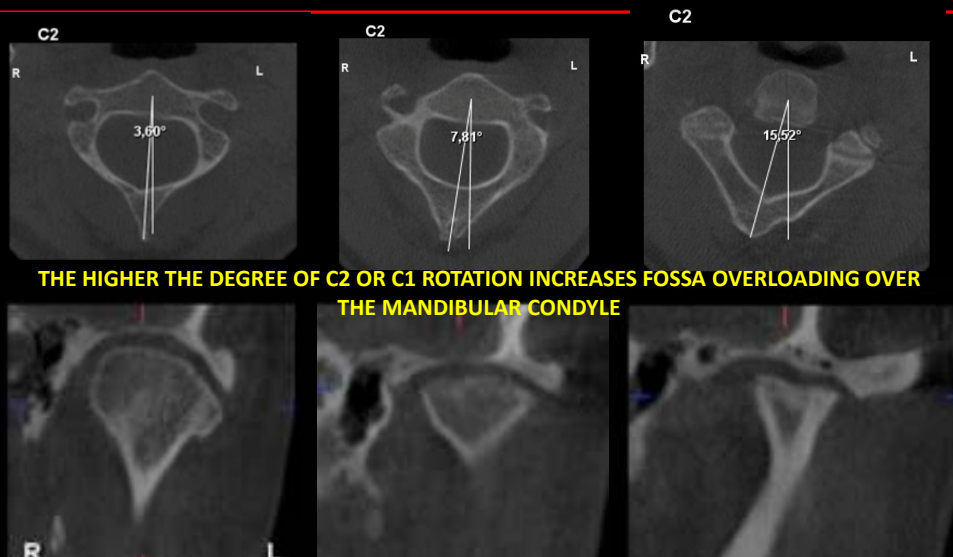
ANATOMÍA

RELACION CONGRUENTE ESTABLE CRANEO VERTEBRAL
RELACION TRICENTRICA.

**CONGRUENT CRANIOVERTEBRAL TRICENTRIC RELATION.
STABLE.**



**HIGH RESOLUTION TOMOGRAPHY IN THE DIAGNOSIS OF CRANIO VERTEBRAL
ATLAS AXIS AND C2 C3.
AND RELATION TO THE PROGRESSION OF PATHOLOGY OF THE SYNOVIAL
TEMPOROMANDIBULAR JOINTS.**



**POSTERIOR CONDYLE-DISC
ROLL BACK TECHNIQUE..**

IT IS BASED IN A JOINT AND NEUROMUSCULAR BIOMECHANICAL PRINCIPLE. ITS OBJECTIVE IS TO ENSURE A CONGRUENT POSITION OF THE CONDYLE DISC-DISC EMINENCE JOINT SURFACE.

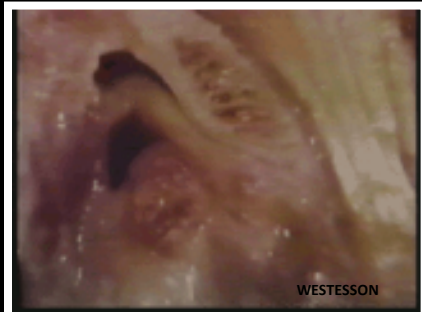
ALLOWING A SIMULTANEOUS MOVEMENT OF THE CONDYLE AND THE DISC INTO A DISC-EMINENCE REDUCTION POSITION. IT MUST BE APPLIED IN JOINTS THAT ARE REDUCED IN PROTRUSION, PACIFIED, PAINLESS, AND UNDER THE STRICT CONTROL OF THE THERAPIST. IT REQUIRES SKILLS AND A GOOD UNDERSTANDING OF THE TECHNIQUE BY THE PATIENT.

PROF. DR. MARIANO ROCABADO

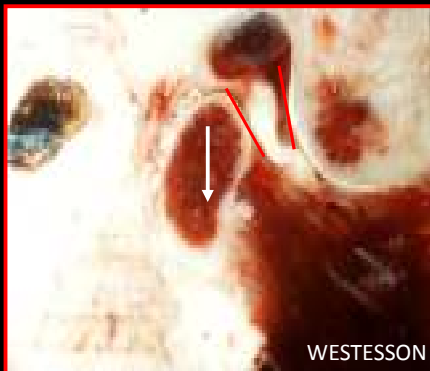
POSTERIOR CONDYLE DISC AND ANTERIOR DISC EMINENCE SUBLUXATION.

**REDUCTION RECHNIQUE.
POSTERIOR CONDYLE DISC ROLL BACK
TECHNIQUE OF ROCABADO.**

**THE SHARING EXPERIENCE
THE STMJ FROM INSIDE-OUT.**



PROF. DR. MARIANO ROCABADO



**IMPORTANCIA DE LA
DISTRACCION LONGITUDINAL.**

**RETRODISCITIS. DOLOR 7 Y 8.
EL CONDILO SE SUBLUXA EN EL DISCO Y EL
DISCO SE LUXA EN EL TEMPORAL (E.A).**

**RETRODISCITIS. PAIN 7 AND 8
THE CONDILO IS DISLOCATED IN THE
POSTERIOR BAND OF
THE DISC SUBLUXED IN THE TEMPORAL BONE
(E.A).**

**TECNICA DE REDUCCION DISCO EMINENCIA
ARTICULAR TEMPORAL
PROF. DR. MARIANO ROCABADO.**

**POSICION DE LUXACION POSTERIOR CONDILO
DISCAL Y ANTERO INFERIOR DISCO
EMINENCIA ARTICULAR.
DIAGNOSTICADO COMO: SUBLUXACION
O LUXACION ANTERIOR DISCO CONDILAR.**

**REDUCTION TECHNIQUE FOR DISC
TEMPORAL EMINENCE SUBLUXATION.
PROF. DR. MARIANO ROCABADO**

**POSTERIOR CONDYLE/DISC AND
ANTERIOR INFERIOR DISC EMINENCE
LUXATION POSITION.
DIAGNOSED AS: SUBLUXATION
OR ANTERIOR CONDYLE/DISC LUXATION.**

PROF. DR. MARIANO ROCABADO